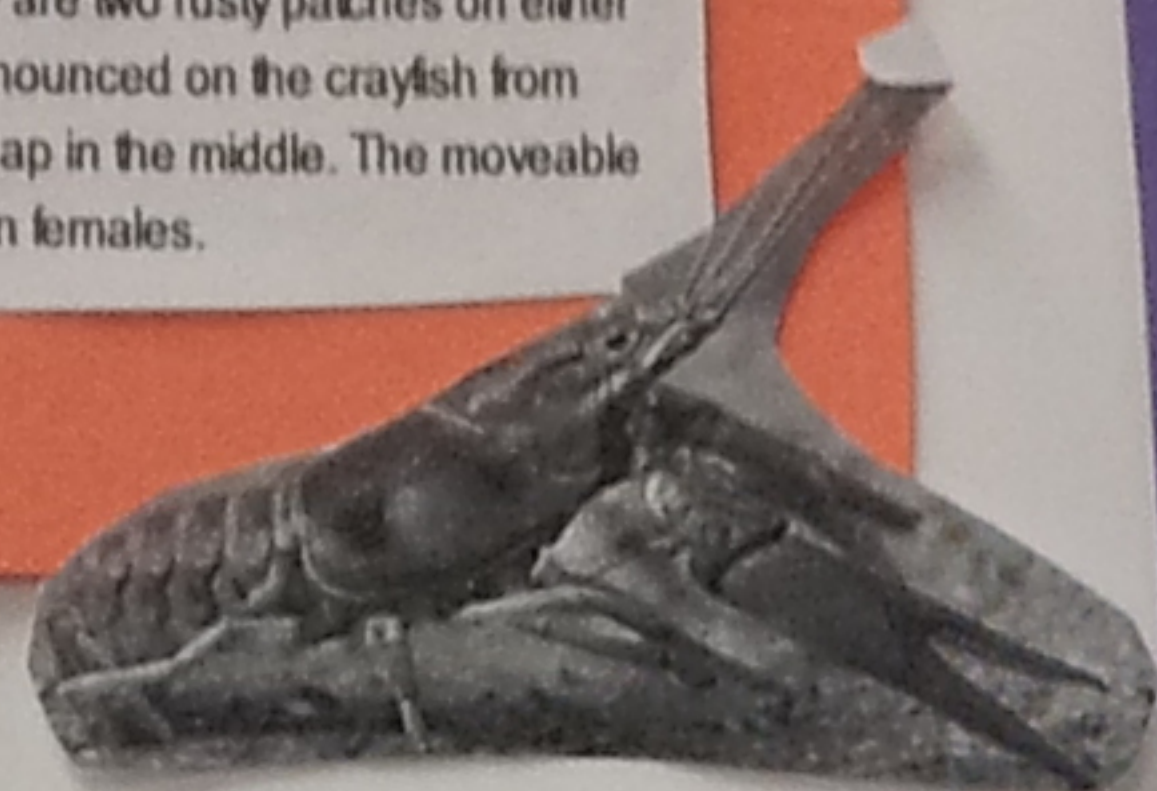


How To Identify A Rusty Crayfish?

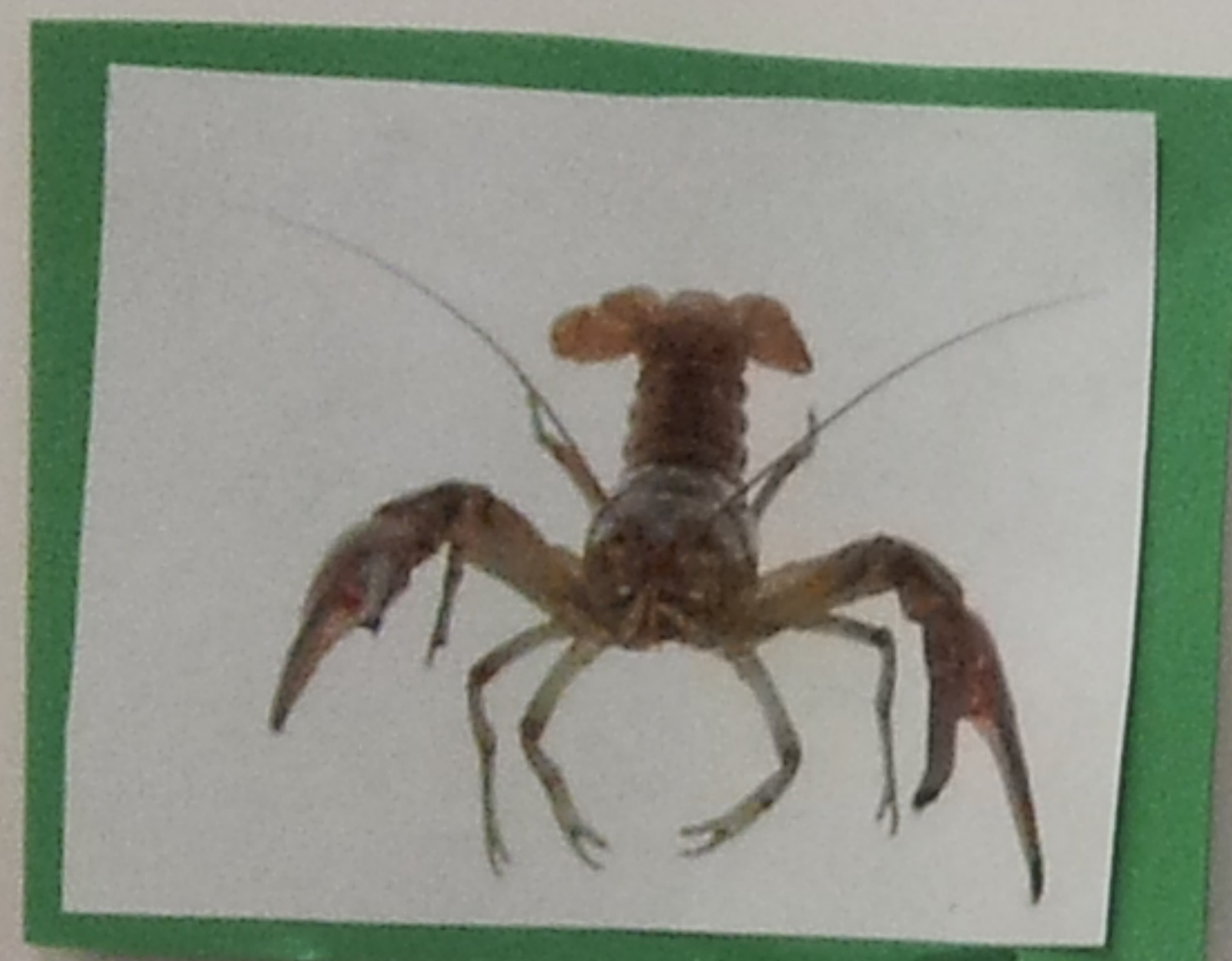
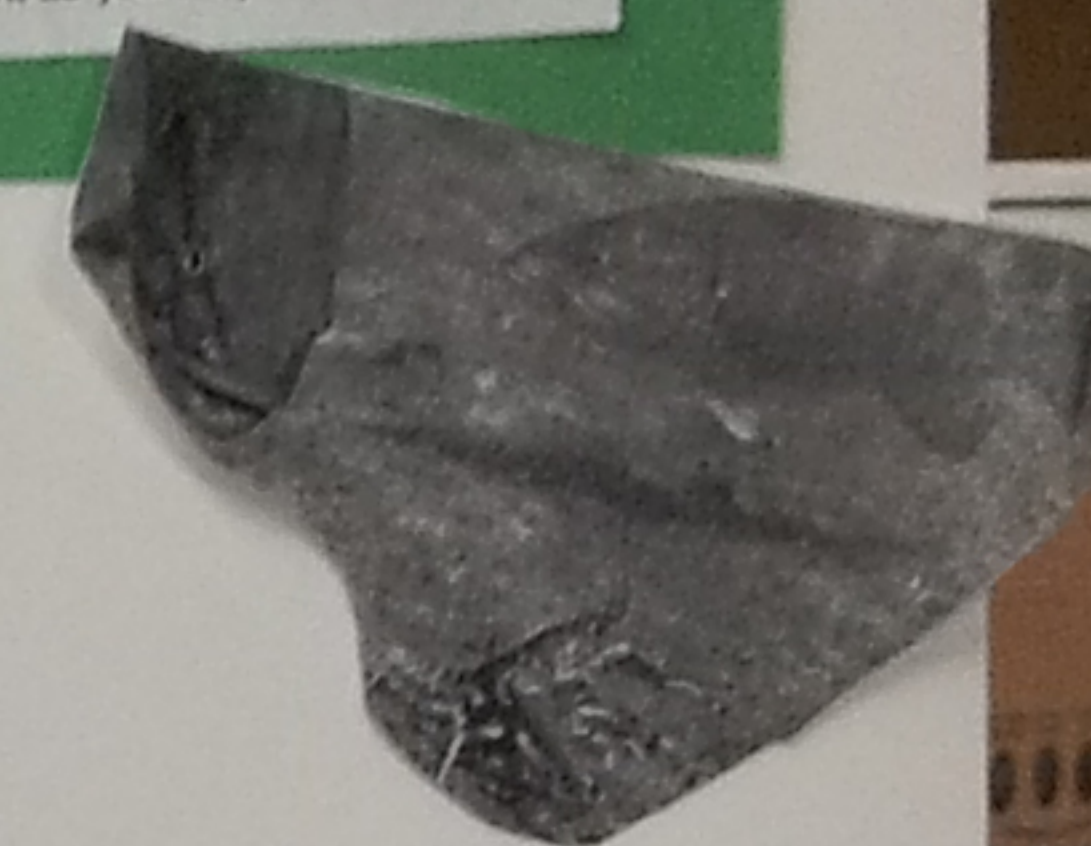
The Rusty Crayfish has a brown body and large claws. It's claws are grayish-green to reddish-brown with dark black bands on the tips. Also there are two rusty patches on either side of the crayfish's body. These patches may be less pronounced on the crayfish from different areas. The claw, when closed, they have an oval gap in the middle. The moveable claw is smooth and S-shaped. Males Tend to be larger than females.



Rusty CRAYFISH

How To Catch A Rusty Crayfish

Place a container or large net submerged in water gently and about 6 inches behind the crayfish, use a stick and gently move towards the head of the crayfish and the crayfish will swim into the submerged container. Note you do not have to touch the crayfish with the stick to make it swim into the container. Entice with bait. You can use bait to try to lure it out, but do not yank at it, you can either hurt or kill the crayfish. If you search under any rocks move a rock gently with a stick, do not do it rough because you can kill a crayfish like this. But, because it has a hard exoskeleton, it isn't too easy to kill, so you CAN pick it up, just be careful, like you would be with any animal. Try a lantern method. Most crayfish and lobsters mostly feed at night, however, I do not recommend running around in wet creeks at night as you may slip and fall.



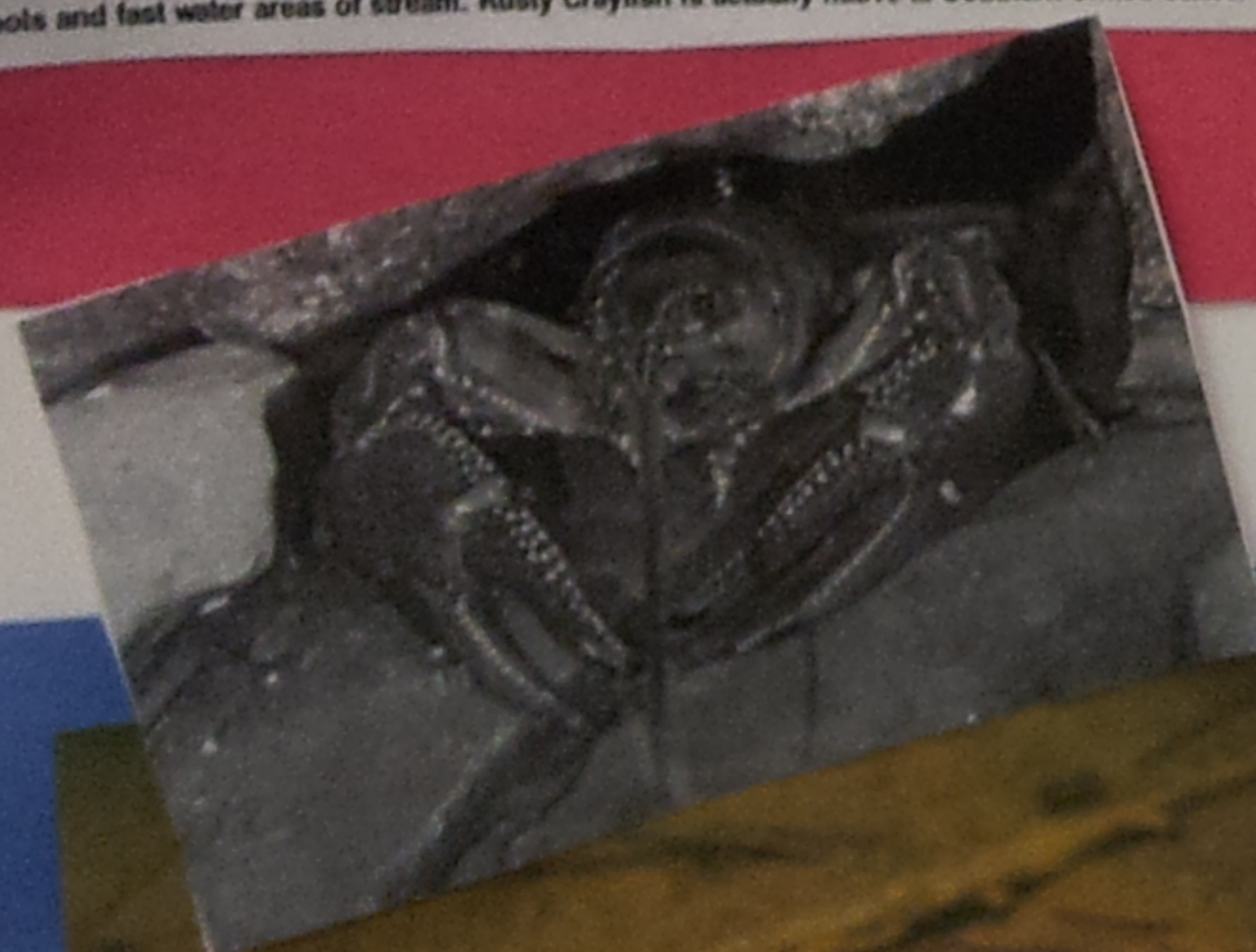
What do Rusty Crayfish do to the Environment?

Rusty Crayfish Reduce the amount and types of aquatic plants, invertebrates populations, and some fish populations especially bluegill, small mouth and large mouth bass, lake trout and walleye. They deprive native fish of their prey and cover and out compete native crayfish. Rusty Crayfish will also attack the feet of swimmers. On the positive Side, Rusty Crayfish can be a food source for large game fish and are commercially harvested for human consumption.



Where do Rusty Crayfish Live?

Rusty Crayfish live in lakes, ponds, and streams. They like areas that offer rocks, logs, or other debris as cover. Bottom types may be clay, silt, sand, gravel, or rock. Rusty crayfish live in both pools and fast water areas of stream. Rusty Crayfish is actually native to Southern United States.



STOP AQUATIC HITCHHIKERS!
Prevent the transport of nuisance species.
Clean all recreational equipment.
www.ProtectYourWaters.net



Why are Rusty Crayfish a problem?

- Rusty crayfish displace native crayfish
- They destroy plant bed abundance and diversity

How do rusty crayfish spread?

- spread by use as bait.
- females carry fertilized eggs which make spread easier.

How do we control rusty crayfish?

- Learn to identify the rusty crayfish
- Do not use rusty crayfish as bait
- Always drain water from your boat, livewell, and bilge before leaving any water access
- always dispose of your unwanted bait on land or in the trash
- Never dip your bait bucket into a lake or a river if it has water in it from one water body into another.

